

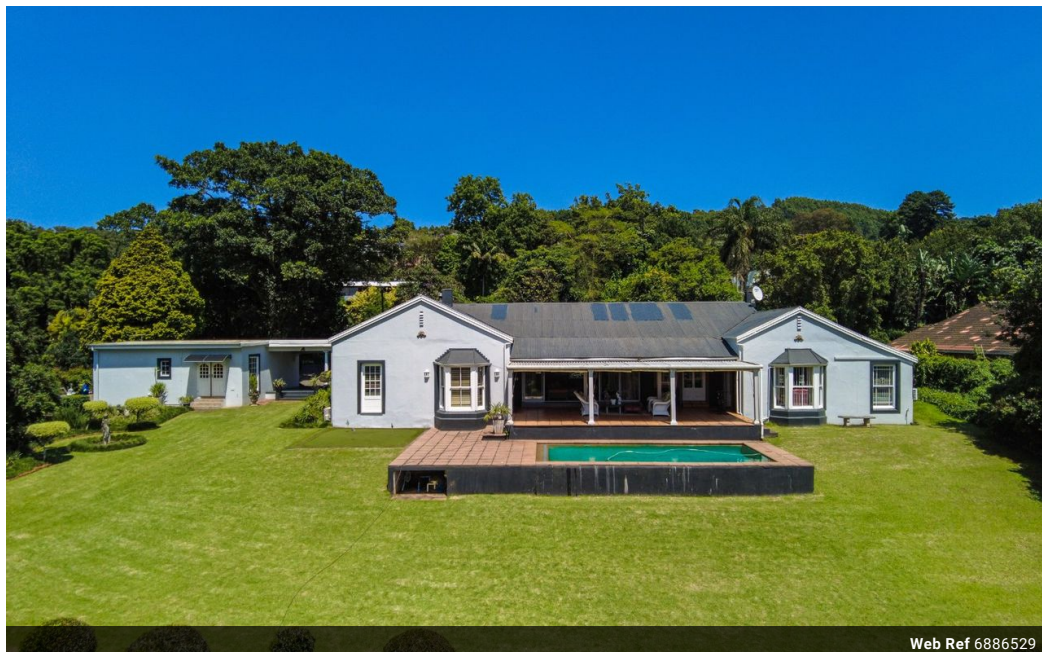


**Bruce Campbell**  
083 226 2015  
bruce@natalproperty.co.za

Contact Pietermaritzburg

033 345 1515

Property House  
78 Commercial Road (78 Chief Albert Luthuli Road)  
Pietermaritzburg  
3201



Web Ref 6886529



R3,450,000

4 3 1

**Monthly Bond Repayment** R35,610.50

Calculated over 20 years at 11% with no deposit.

**Transfer Costs** R216,214.00 **Bond Costs** R47,840.00

These calculations are only a guide. Please ask your conveyancer for exact calculations.

**Monthly Rates** R4,100

## CHARMING HERITAGE HOME WITH BREATHTAKING VIEWS IN WEMBLEY

Step into a world of timeless elegance with this magnificent character-filled home in the heart of Wembley. Over 100 years old, this grand residence showcases the beauty of a bygone era, featuring stunning Oregon pine floors, classic wooden windows, and a warm, inviting ambiance throughout.

Boasting four bedrooms and three bathrooms, this home offers ample space for family living. A study provides the perfect work-from-home space, while two lounges and a formal dining room create an inviting atmosphere for relaxation and entertaining. The well-appointed kitchen, complete with a separate scullery, makes daily living a breeze.

Outside, the beautiful garden provides a private sanctuary, offering spectacular views over the city. A sparkling swimming pool is the centerpiece of this stunning outdoor space, complemented by a...

## Features

### Interior

|              |   |
|--------------|---|
| Bedrooms     | 4 |
| Bathrooms    | 3 |
| Kitchens     | 1 |
| Recep. Rooms | 5 |
| Studies      | 1 |

### Exterior

|             |     |
|-------------|-----|
| Garages     | 1   |
| Security    | Yes |
| Dom. Accom. | 1   |
| Pool        | No  |

### Sizes

|           |                   |
|-----------|-------------------|
| Land Size | 369m <sup>2</sup> |
|-----------|-------------------|